

Citizens Electoral Council of Australia

Postal Address: PO Box 376, Coburg Vic 3058

Phone: 1800 636 432 Fax: 03 9354 0166

Home Page: www.cecaust.com.au Email: cec@cecaust.com.au



Authorised by R. Barwick, 595 Sydney Road, Coburg, Victoria 3058. Printed by Citizens Media Group Pty Ltd., 595 Sydney Road, Coburg, Victoria 3058.

Independent Political Party

2nd of June 2013

Why are Ian Lowe and John Edwards, destroyers of rural Australia, and economic hitmen for the financial empire, speaking at *Sustaining Rural Communities?*

Get off your knees, rural Australians! To survive and thrive, go with the CEC's solution:

1. **Separate essential banking from speculation—Fight for Glass-Steagall and debt moratorium**
2. **A government bank to fund a revival of primary industries and manufacturing**
3. **Big public infrastructure projects—water, power, rail**

The Sustaining Rural Communities 2013 Narrabri conference features two speakers who are personally guilty of preparing and promoting the policies of free trade and green fascism that have intentionally destroyed the industrial fabric of rural Australia.

Professor Ian Lowe is the President of the Australian Conservation Foundation (ACF), whose predecessor in that position, Prince Philip, set up and ran the ACF for the express purpose of *de-industrialising* Australia. As Prince Philip himself expressed it, he launched the environmental movement as the vehicle to apply the population-reduction ideas of Thomas Malthus, an infamous advocate of mass murder. Under his leadership, the ACF set up the Greens political party. The ACF and the Greens have worked in tandem ever since to seek and destroy Australia's essential industries and infrastructure which meet the daily needs of the population. They are working towards the global green fascist agenda of reducing the world's population down to one billion people, and Australia's to as few as five million. They have especially targeted the rural industries that produce Australia's food supply: under Lowe's leadership, the ACF took the lead in demanding the shut-down of Australia's premier food bowl, the Murray-Darling Basin. The current MDB Plan is a huge threat to all of the rural communities in the Basin.

Dr John Edwards was the economics adviser to Prime Minister Paul Keating, whose economic deregulation policies were intended to destroy Australia's agro-industrial economy. With Edwards at his side, Keating set out to replace farming and manufacturing with raw materials exports and "financial services"—to turn Australia into a casino economy, "the Wall Street of the South" he said. Their free trade tariff cuts smashed domestic manufacturing and rural industries that supplied the local market, including pork producers and fruit growers. They rammed through National Competition Policy, to destroy local production in key sectors—notably dairy, wiping thousands of dairy farmers out and driving hundreds to suicide—and create the Coles/Woolworths juggernaut. John Edwards went on to become chief economist for the Hong Kong Shanghai Banking Corporation (HSBC), a cornerstone of the corrupt British banking system which in 2012 was caught out laundering drug money on a massive scale.

Why on earth are these two being asked to advise on sustaining rural communities?

It is time that rural Australians got off their knees. The crisis in rural Australia is a crisis for the entire nation. At stake is Australia's food security, which is essential to our independence and sovereignty. The goal for rural Australia is not to be "sustainable"—a green fascist euphemism for population reduction. The goal should be to prosper, to revive old industries and develop new ones, and to develop the water and transport infrastructure to serve those industries and build up the rural population again.

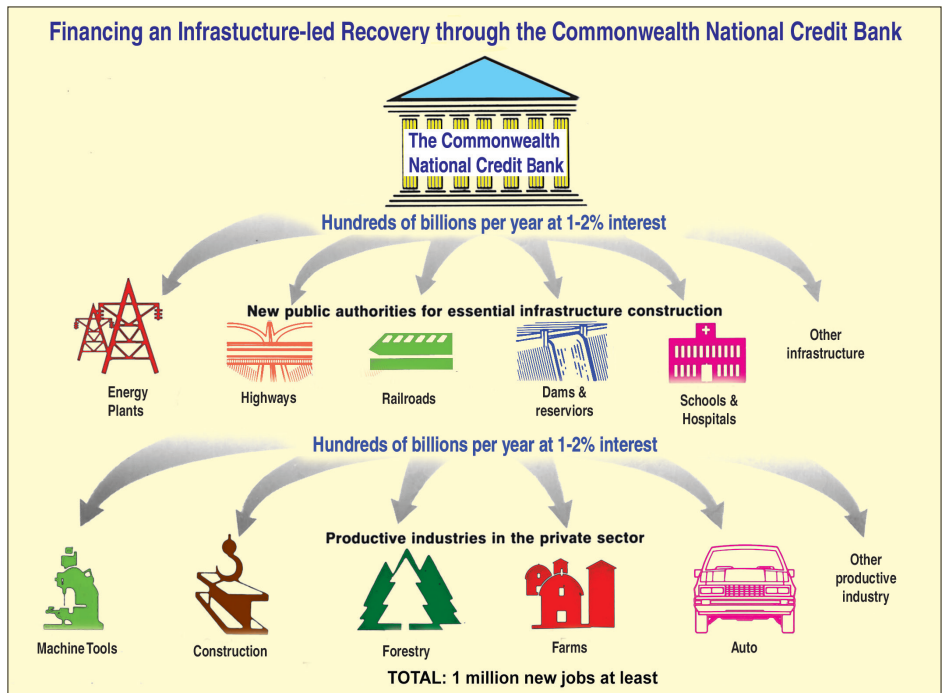
The existing major political parties have betrayed rural Australia, by bowing to the free trade/green fascist agenda. The National Party especially has turned its back on the legacy of the great John "Black Jack" McEwen, whose protectionist policies

consolidated Australia's shift from its pre-war status as an agrarian backwater, to an agro-industrial powerhouse, with strong primary industries producing commodities to which equally strong secondary industries value-added.

The Citizens Electoral Council has a three-point economic solution for Australia. This program will revive the industries that are the backbone of rural communities, and restore those communities to genuine prosperity.

1. A Glass-Steagall separation of essential banking services from financial speculation. Glass-Steagall refers to a successful American law that from 1933-1999 forbade Wall Street's investment banks from owning commercial banks that held people's deposits and serviced daily commerce. Its repeal led directly to the explosion of derivatives speculation that caused the GFC. Australia's banks carry a combined \$20 trillion of derivatives gambling obligations, and presently they are withdrawing essential credit from productive rural industries, so they can gamble even more. Australia needs its own banking separation, so that essential banking services, including, emphatically, lending to rural industries, are protected by the government.

2. A government bank to fund a revival of primary industries and manufacturing. The CEC has legislation for a Commonwealth National Credit Bank, which will take over the functions of the Reserve Bank, but with the extra functions it had when it was the Commonwealth Bank in WWII. This will be a national bank, which harnesses the nation's credit, to finance the long-term investments of the federal, state and local governments, and finance essential industries at low interest. Its money will come from the deposits of all three tiers of government, as well as businesses and individuals. It will make loans in the



public interest, not according to the present system of highly-manipulated "market" rules.

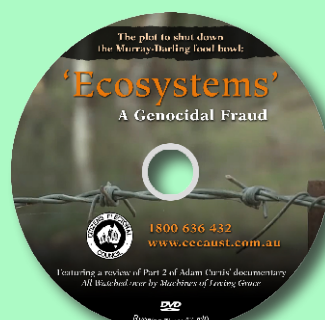
3. Big public infrastructure projects in water, power and rail etc. The key to reindustrialising Australia is embarking on a major infrastructure development program that creates millions of jobs and stimulates our domestic industries. With low-interest finance from the government bank, Australia can return to the outlook that built the Snowy Mountains Scheme. The CEC has a development blueprint called *The Infrastructure Road to Recovery*, which details 18 major water diversion projects, including the Clarence River Scheme to inject more water into the irrigation systems of the Murray-Darling Basin. It also features plans for high-speed rail, high-speed shipping, and nuclear power that can capitalise on our abundant reserves of uranium and thorium and make energy abundant and affordable again.

"Sustainability" is a lie, used as the cover for the agenda of population reduction. It is designed to suppress development, and unless it is dumped, we will never revive our physical economy and industrial base. For the truth on the scientific fraud behind the sustainability lie, watch this video:



ORDER FREE DVD

For a free copy of our DVD: ***The plot to shut down the Murray-Darling food bowl: 'Ecosystems' A Genocidal Fraud*** call toll-free 1800 636 432, or send this coupon to: CEC, PO Box 376, Coburg, Victoria, 3058 and please leave ALL your details.



Name: _____

Address: _____

Phone: _____

Email: _____

JOIN OUR EMAIL LIST AT www.cecaust.com.au